

Dairy Market Watch: January 2026

Lainey Koval

Trends in component production

In January 2026, percent butterfat and protein in milk held relatively constant from the month previous both in the northeast (NE) FMMO #1 and on average across all U.S. orders. Butterfat averaged 4.56 percent in the NE order, up 2.5 percent year over year. Percent butterfat across all orders averaged 4.46 percent. Percent protein averaged 3.38 percent in the NE order, up 1.8 percent year over year. The average across all U.S. orders was slightly higher, at 3.45 percent. According to the market administrator, the average percent butterfat tied the record high for the order and percent protein set a record high for the month of January.

CHART 1

% Butterfat, Average Test of Producer Receipts
Northeast Order vs. US Average

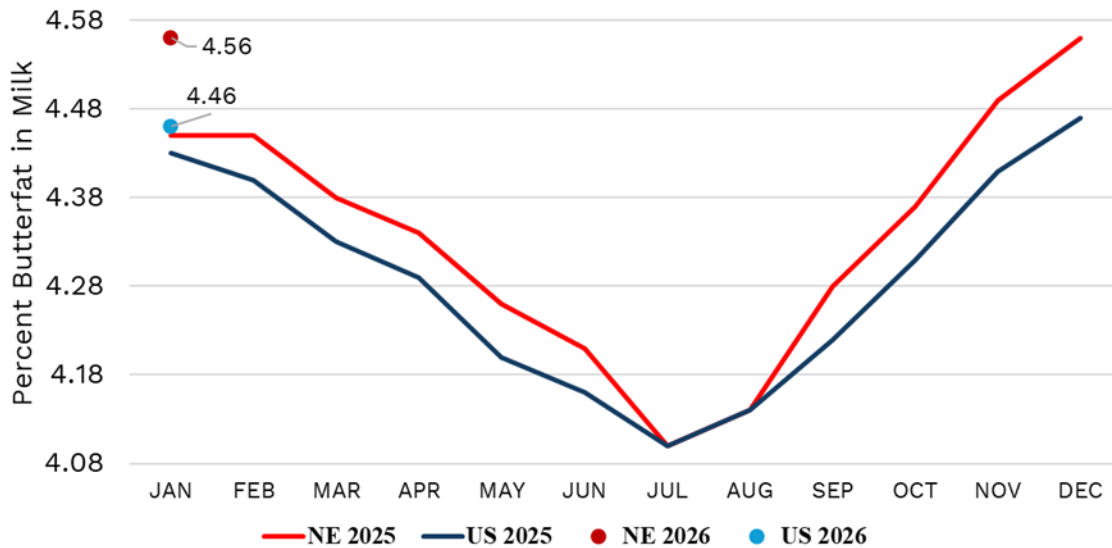
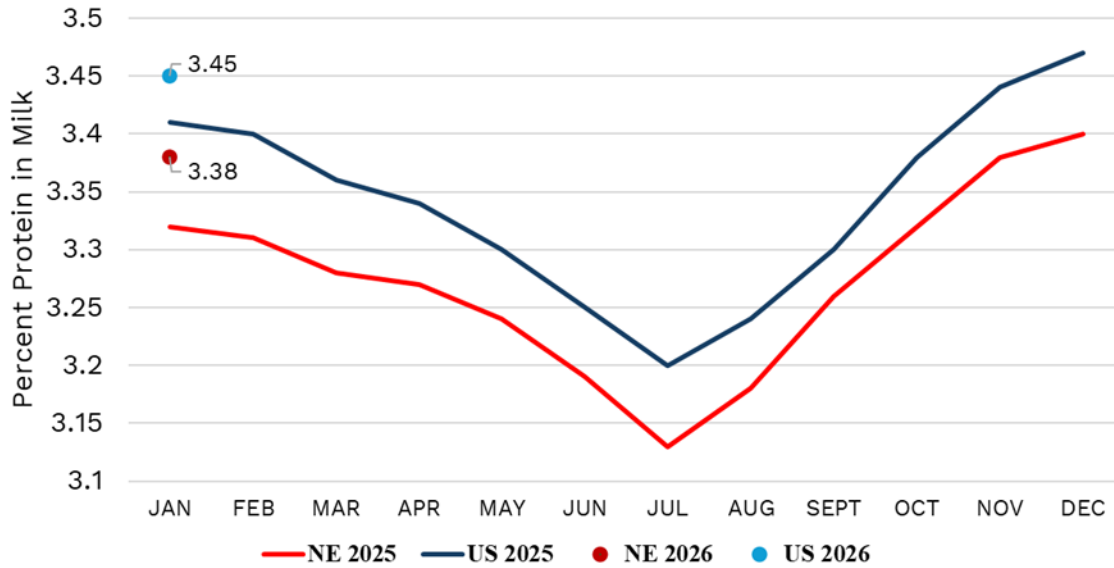


CHART 2

% Protein, Average Test of Producer Receipts
Northeast Order vs. US Average



Trends in price and utilization

In January, the Statistical Uniform Price less PPD at average pool component levels was \$16.53 per cwt. in FMMO #1. Adding in PPD, which was \$2.05 at Suffolk County, MA, the SUP at average component levels was \$18.58 per cwt. Looking at component prices, the butterfat price was \$1.45/lb. and protein price was \$2.18/lb.

Fluid milk utilization of pooled milk in FMMO #1 increased from the month prior for Class II and Class III. According to the Market Administrator. Looking at utilization of selected products, yogurt, butter and cheese saw year over year increases in utilization in the month of January.

CHART 3

Statistical Uniform Price less PPD

Northeast FMMO #1

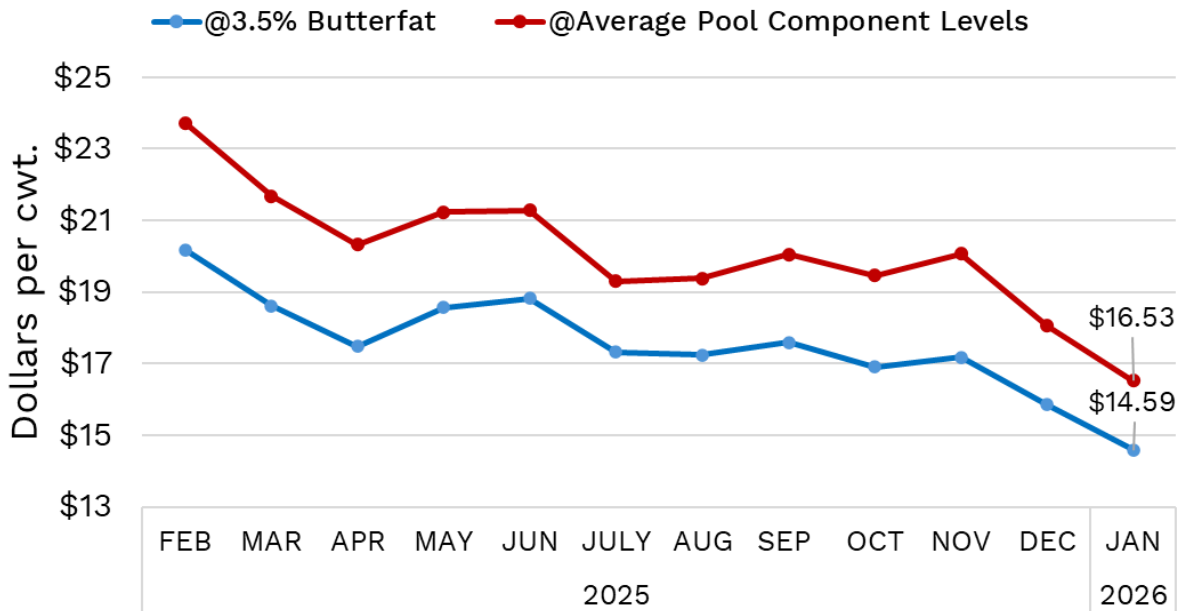


TABLE 1

Monthly Component Prices			
Dollars per lb.			
	BF	PRO	OS
FEB	\$2.82	\$2.53	\$0.48
MAR	\$2.62	\$2.46	\$0.36
APR	\$2.64	\$2.17	\$0.31
MAY	\$2.66	\$2.48	\$0.32
JUN	\$2.74	\$2.53	\$0.29
JULY	\$2.84	\$1.87	\$0.31
AUG	\$2.73	\$1.96	\$0.32
SEP	\$2.19	\$2.71	\$0.32
OCT	\$1.83	\$2.88	\$0.34
NOV	\$1.71	\$3.01	\$0.39
DEC	\$1.58	\$2.45	\$0.44
JAN	\$1.45	\$2.18	\$0.44

CHART 4

**Utilization by Class, Pounds of Pooled Milk
Northeast FMMO #1**

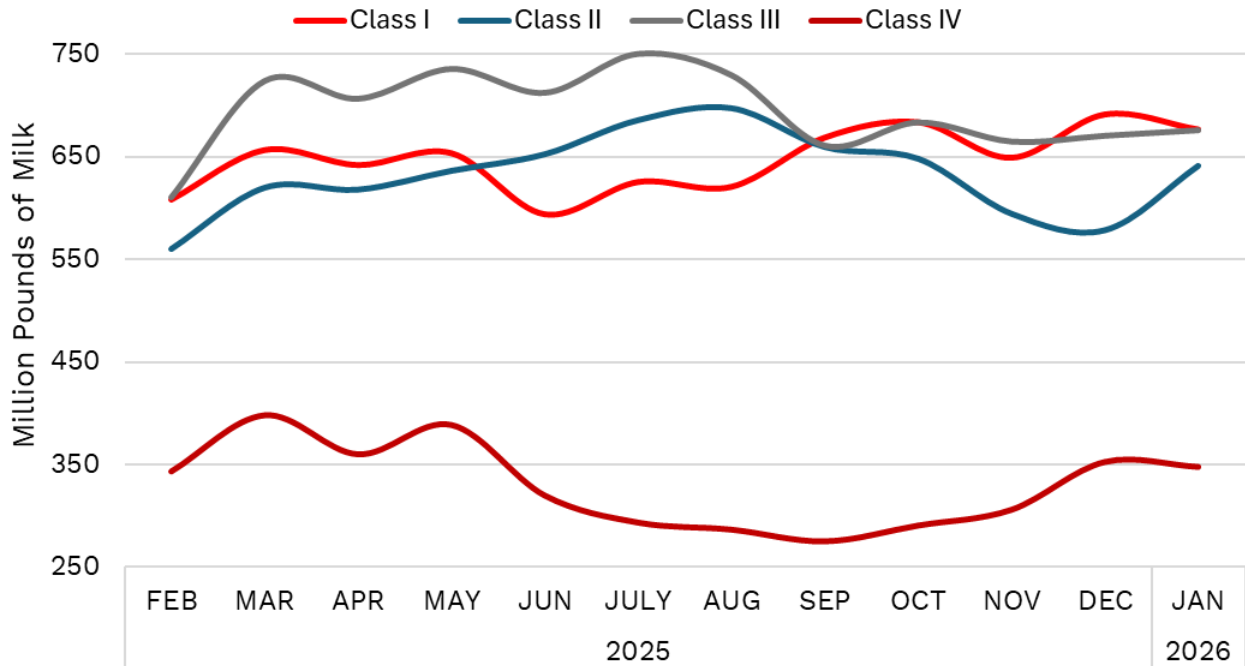
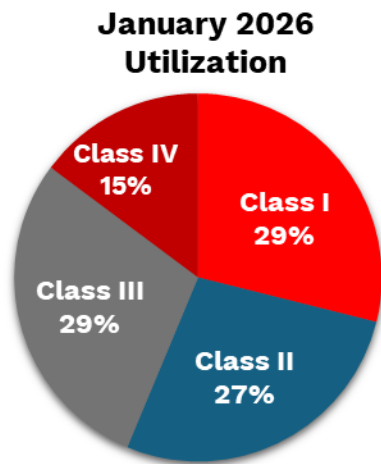


TABLE 2

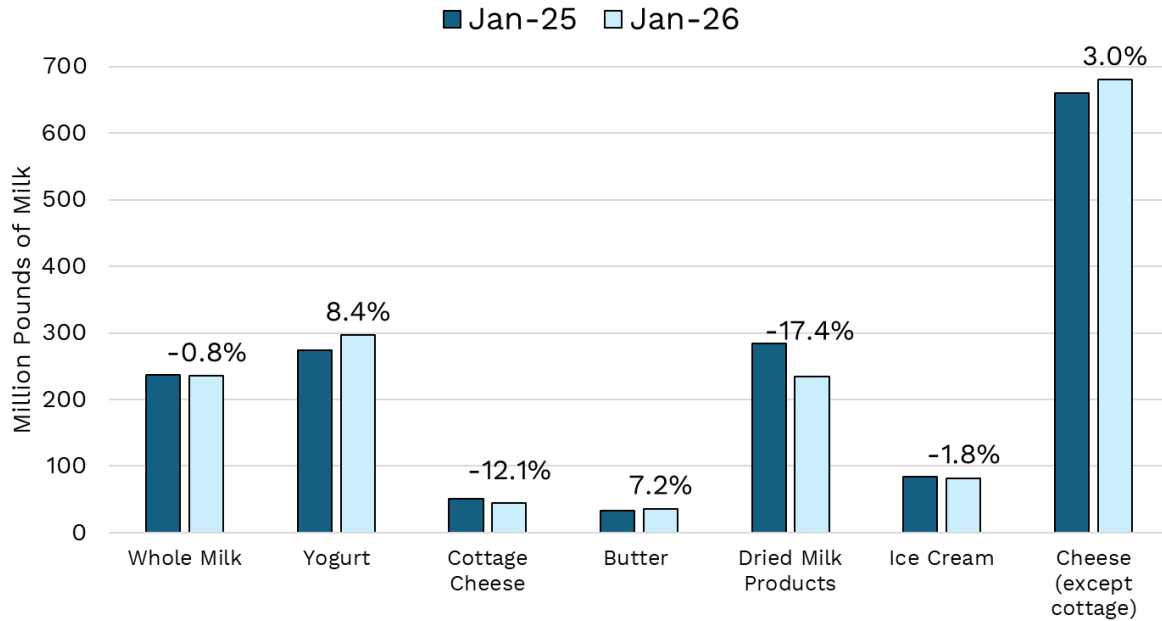


Class Definitions	
I	Fluid milk products, cultured or flavored milk drinks, eggnog
II	Yogurt, ice cream, soft products, sour cream, bakery products, cottage cheese, frozen desserts
III	Cheese (other than cottage), condensed milk
IV	Butter, dried milk products

CHART 5

January Milk Utilization by Product, NE FMMO #1

Data labels show % change year-over-year



References

[Northeast Marketing Area Federal Milk Marketing Order No. 1](#) (January 2026). Federal Milk Marketing Order Program.

[U.S. Department of Agriculture, Agricultural Marketing Service](#) (January 2026). My Market News: Report 3462, “Producer Milk Components.”

For more information

Lainey Koval, HLK65@cornell.edu, Cornell CALS PRO-DAIRY